

MITSUBISHI ELECTRIC INDIA PVT. LTD.
TECHNOLOGY MEETS INNOVATION

Bringing Innovative Technology To Society.

Since we have completed our 100th anniversary, the company-wide focus is clear - applying our technologies to contribute to society and enhance quality of life around the globe.

We are working to create a brighter future through innovation, and to ensure a more sustainable world. In order to achieve this goal, we will continue to improve our wide-ranging products, services, and business activities to help change the planet's environment for the better. Becoming a global leading green company is our future, and it's the key in creating a greener tomorrow.

Mitsubishi Electric India Pvt. Ltd. is a wholly owned subsidiary of Mitsubishi Electric Corporation with offices in 23 locations across the country including 3 Manufacturing, 8 Tech Centers and 1 R&D Center. With over 800 employees Mitsubishi Electric India Pvt. Ltd. has grown to become a company offering a wide range of innovative and high-quality products for the Indian market. This includes products and solutions for Air Conditioners, Factory Automation and Industrial Systems, Semiconductor & Devices and Transportation Systems.



Contents

Corporate Mission	4
Timeline Of Progress	5
Air Conditioning Systems	6 7
Factory Automation Systems	8 9
Semiconductors and Devices	10 11
Transportation Systems	12
Building, Data Centre & Manufacturing Solutions	13
Better Ideas For A Greener World	14
Sustainable Development Journey	15

PURPOSE

We, the Mitsubishi Electric Group, will contribute to the realization of a vibrant and sustainable society through continuous technological innovation and ceaseless creativity.



OUR VALUES

Trust	We develop relationships based on strong mutual trust with all stakeholders including society, customers, shareholders, suppliers, and employees working together.
Quality	We ensure the satisfaction of society and customers by providing products and services of the best quality.
Technology	We provide society with new value by enhancing technology and onsite capabilities.
Ethics and Compliance	We act with high ethical standards and comply with laws and social norms.
Humanity	We prioritize health and safety, promote diversity, and respect personalities and human rights.
Environment	We strive to protect and improve the global environment, doing so in harmony with nature.
Society	We contribute to the development of a better society as a corporate citizen.

Commitment

"Changes for the Better" represents the Mitsubishi Electric Group's attitude to "always strive to achieve something better", as we continue to change and grow. Each one of us shares a strong will and passion to continuously aim for change, reinforcing our commitment to creating "an even better tomorrow".

Our Stance on "make in India"

Mitsubishi Electric in India supports "Make in India" which is a major new national program. Designed to facilitate investment, foster innovation, enhance skill development, protect intellectual property and build best-in-class manufacturing infrastructure.

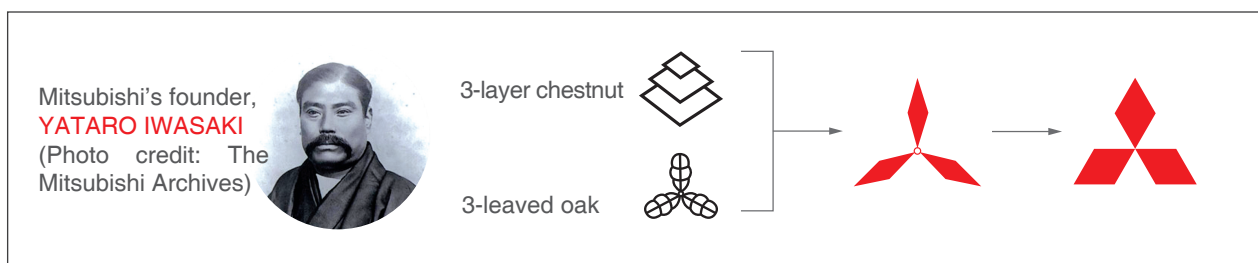
Mitsubishi Electric has manufacturing facilities in India to promote 4 businesses namely: Automotive Equipment, Commercial Air Conditioning, Elevators & Escalators and Factory Automation.

Mitsubishi Electric also supports industries with world class electric and electronic equipment through products of factory automation, low voltage switchgears and semiconductor & device. Through this stance, Mitsubishi Electric aims to support the national program and promote its vision of fostering holistic development of every country where it operates.

Timeline Of Progress

- 1870** Tsukumo Trading Company, which was the origin of Mitsubishi, was established.
- 1886** Mitsubishi Corporation was established. It promoted its business diversification and grew as a modern corporation.
- 1917** Spinning-off of the business departments started. Mitsubishi Headquarters became a holding company.
- 1921** Mitsubishi Electric Corporation was established.
- 1945** Mitsubishi Headquarters was dissolved.
- 1946** Each Mitsubishi company started as a new independent entity.

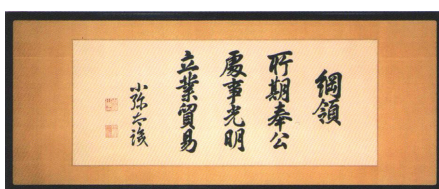
Mitsubishi Electric Corporation is an independent company, like other Mitsubishi companies. With the exception of other companies in the Mitsubishi Electric Group, it bears no legal affiliation to other companies that have the word "Mitsubishi" in their names.



Our origins can be tracked back to Yataro Iwasaki (1835-1885), the founder of the Mitsubishi Group, from which Mitsubishi Electric was born. His philosophy of justice and duty to society is summarized in a creed articulated by Koyata Iwasaki, the fourth president of the Mitsubishi Electric and other Mitsubishi companies share these three tenets of Iwasaki's management philosophy.

- Corporate Responsibility to Society
- Integrity and Fairness
- Global Understanding through Business

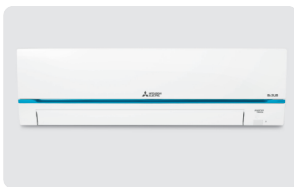
Guided by this common heritage, Mitsubishi Electric transforms these words into action, pursuing thoroughgoing compliance and a variety of philanthropic and environmental activities around the world.



The Three Principles

Air Conditioning Systems

Mitsubishi Electric is a global leader in air conditioning systems for residential, commercial and industrial use. Challenged to create innovative air conditioning systems, our engineers develop amazingly sophisticated yet durable units with Japanese state-of-the-art technology that can withstand extreme conditions. Each product is an amazing feat in its own, delivering energy-efficient performance with minimum impact on the environment.



Room Air Conditioners

A wide variety of indoor unit designs and outdoor unit capacities ensures the flexibility to meet the most challenging of air conditioning needs. From aesthetic wall-mounted and floor-standing designs to ceiling-recessed cassettes, abundant options are available to match virtually any interior design. Many systems are equipped with the "I-see sensor", an original Mitsubishi Electric technology that realizes better air conditioning control. This is combined with other industry-leading energy-saving and silencing technologies to produce air conditioners that provide optimum performance and room comfort wherever they are installed.



Package Air Conditioners - Mr Slim

The Mr. Slim Series of small- to medium-sized split-type room air conditioners offers the convenience of being compact yet powerful; a combination ensuring excellent performance and easy installation. Available in a variety of capacity and design combinations, the Series is ideal for creating a "best match" system for your air conditioning requirements. Inverter-based units promise industry-leading quiet operation and a high coefficient of performance (COP).



Variable Refrigerant Flow (VRF) Systems - City Multi

Mitsubishi Electric's VRF air conditioning systems offer the luxury of distributed airflow and the independent control of indoor units. Installation flexibility and a wide selection of indoor unit designs and outdoor unit capacities ensure "best match" solutions for air conditioning needs, even for the most diversified requirements. Consideration for the environment during development has led to the manufacture of powerful, compact units that consume minimal energy, have a high coefficient of performance (COP) and contribute to maximum room comfort.



Hand Dryers - Jet Towel

These high-speed hand dryers use "jet blasts" of air to dry hands completely in a matter of seconds. Mitsubishi Electric developed this original technology in 1993, and the popularity of these hand dryers has continued growing ever since. Today they can be found installed in hotels, restaurants, shopping centers, schools and other public facilities in countries worldwide. Energy-efficient, low-noise operation brings a new level of convenience and satisfaction to users while saving on operating costs.



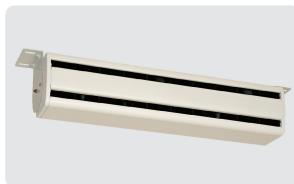
Air Curtains

To meet the needs of open-front stores and shops in shopping malls, building complexes and street-level businesses, Mitsubishi Electric developed a line-up of high-performance air curtains. These systems create a wall of air that protects the interior space from climatic temperature swings, polluted air, etc. Both quiet and powerful, our systems are an energy-efficient solution for providing enjoyable indoor environments that are clean and comfortable.



Ventilators - Lossnay

The unique Lossnay heat-exchange technologies developed by Mitsubishi Electric help refresh a room's air while leaving temperature and humidity largely unchanged. The Lossnay core is comprised of a diaphragm constructed of specially processed paper configured into a cross-flow, plate-fin structure. The advanced heat-transfer and moisture permeability properties of the paper help maximize the recovery of heat as air is circulated through the element. The result is substantial energy savings and a more comfortable indoor environment. Lossnay ventilators can be used alone or in combination with other air conditioning/ventilation systems.



Air Conducting Fan

Mitsubishi Electric Air Conducting fans are used as auxiliary equipment for ventilators and air-conditioners in guiding flow of exhaust gas in car parks and improving the efficiency of ventilation and air-conditioning in plants and warehouses, with lower initial cost and simple installation.



A simple piece of paper gave us a fresh new idea for energy-saving ventilation

Lossnay Energy Recovery Ventilator: Blow into a tube of paper, and the heat is transferred to your hands. This is the principle behind Mitsubishi Electric's Lossnay Energy Recovery Ventilation System. Lossnay incorporates a unique heat exchange filter made of a specially processed paper material that transfers the room's temperature to the incoming air-allowing ventilation of the room without largely affecting temperature and humidity. This revolutionary capability minimizes energy loss from ventilation. Lossnay systems are now helping conserve energy around the world.

Factory Automation Systems

Factory Automation Systems brings higher productivity to the factory-floor by offering a vast range of solutions for all major industries. Key Solutions like e-F@ctory enables smart manufacturing along with leading technologies like ICONICS -Smart Visualization software, MELSOFT GEMINI 3D manufacturing simulator, MAISART - AI Solutions, Edge Computing, etc. Automation on shopfloor is further realized by our reliable and efficient Factory Automation products. Together, these technologies and products have helped OEMs, SIs, Panel Builders, Consultants and EPC Contractors catering to different applications in providing reliable solutions. In addition, our extensive service networks provide direct communication and comprehensive support to customers.



Smart Manufacturing Solution - e-F@ctory

The Mitsubishi Electric e-F@ctory concept enables smart manufacturing while extracting hidden benefits from existing resources through integrated automation to improve efficiencies, reduce cost and increasing overall productivity. The reason we can maintain that stature is by staying focused on our core automation competencies whilst partnering with other companies who have best-in-class solutions within their own offering. Mitsubishi Electric provides open platforms and technologies that enable our partner's products to seamlessly integrate with ours. In addition, partners who deliver services are able to provide those service faster and with more consistency.



ICONICS Smart Visualization Software

ICONICS provides automation software solutions that visualize, historize, analyze, and mobilize real-time information for any application on any device.

ICONICS has been defining advanced automation software since 1986 and is operating in over 100 countries worldwide. It has hundreds of thousands of installations serving every industry including Automotive, F&B, Manufacturing, Metals and Mining, Oil and Gas, Pharma, Water and Wastewater, Building Automation, to name a few.



MELSOFT Gemini 3D Manufacturing Simulator

Amidst the digital transformation trend, a demand has emerged to speed up the process from product planning to commercialization, however hurdles such as an increase in the labor time required for rework due to problems upon launch of line and equipment at production sites have emerged.

Mitsubishi Electric dramatically improves this problem with a 3D simulator that can verify line equipment in a digital space. Before launching, we can make "results" visible.

Through MELSOFT GEMINI 3D Simulator Pre-verification is performed in the digital space of a virtual factory or equipment line. This significantly reduces cost and time during the design phase.



Modular and Micro PLCs

Modular Programmable Logic Controllers are developed on the iQ Platform which includes modular control features from a variety of engineering disciplines like Advanced Sequence Control, Information Technology, Motion & Process Control Philosophies. Flexibility and Scalability form the basis of Modular PLCs.

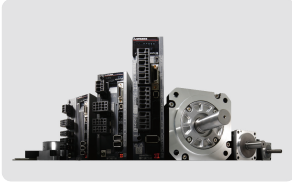
Users can configure their systems for what, when and why they need. These controllers also allow users to control a single machine or an integrated plant-wide management solution.

The iQ-F Series micro controllers within the automation environment operate together in a highly efficient and user-friendly manner with other compact and modular PLCs as well as frequency inverters, servo drives, operating and visualisation systems. These controllers can perform complex positioning task without additional module.



Computerized Numerical Controllers - CNCs

CNCs are the core of machine tool systems, which are commonly called the "mother machine". Mitsubishi Electric's CNCs are equipped with the latest CPU and high-speed optic servo network, to provide high-speed and high-precision machining. They ensure increased productivity in the automotive, IT industries, and various other industries.



Melservo (Drive Products)

Melservo systems combine a servo motor and amplifier. They control the moving parts of machines and equipment (speed, torque, locus, etc.). They contribute to the development of competitive devices, as a driving source for industrial machines. The Motion Controllers range includes advanced Motion controllers/Simple Motion modules for SSCNET III/H; a standalone Motion controller in which a power supply module, a PLC, and a Motion controller are integrated, and a Simple Motion module for CC-Link IE Field Network.



Inverters (Drive Products)

The Mitsubishi Electric range of inverters offer superior driving performance and quality. They are adjustable with frequency power supply and can change the rotation speed of 3-phase induction motors. They are environmental friendly and comply with global standards and provide powerful and consistent driving, aided further by an easy-to-use operation panel. Different applications include crane industry, elevators, pumps, cement, machine tool, air conditioning, winding & unwinding, transfer and energy saving (CO2 reduction), and many more.



Human- Machine Interfaces (Visualization)

Human-Machine Interfaces (HMIs) GOT Series has been designed to deliver maximum usability. They improve efficiency, increase productivity, and create added-value, by allowing customers to monitor information from PLCs, CNCs, and other FA products, and modify various data, through the HMIs. Featuring an impressive array of functions with simple touchscreen operations, they are immensely user-friendly and convenient to use.



Industrial and Collaborative Robots - MELFA

Our smaller, lighter and faster robots manage heavier loads, in terms of weight and functionality. Advanced developments at Mitsubishi Electric include the addition of a dedicated motor and controller fitted with a T64-bit RICS chip set. Models in the line-up are now equipped with a collision detection function and are being used to automate a growing number of production facilities where they contribute to added-value production.



Power Distribution, Monitoring and Control Products

Mitsubishi Electric delivers superior safety standards with intelligent, efficient and reliable range of power distribution, monitoring and control switchgear products. The product basket comprises wide range of ACB, MCCB, MCB measuring and Control gear. The Switchgear range has highest electrical and mechanical life ensuring more output. Low energy consumption makes the product energy saviour and contributes to cost effective installation. The product has ROHS compliance, CE certification, Marine Approval and compliance to overseas standards including European and Chinese, along with KEMA certified Final Distribution Product range.

“Make in India” Graphic Operations Controller (GOC) & MEGATSU IOT Gateway



“**GOC 43**” Is indigenously developed product powered by IEC 61131-3 global programming platform, the GOC43 is a compact device which possesses refined and advanced set of features suitable for every system design. The flexible and modular GOC43 comes with an enhanced colour display with touch-screen operations and variety of communication options to suit all your needs. Designed specifically to meet the requirements of variety of automation needs, GOC43 is suitable for applications in various industries such as Automotive, Pharma, HVAC, Textile and other applications in SPM.



The MEGATSU IoT Gateway Solution empowers you to easily implement IoT at your factory premises. It not only transfers data but also enables analysis, accelerates decision making and results in increased efficiency. It gives you valuable insights in your business, thereby improving decision making, productivity and profitability.

The IoT Gateway enables smart manufacturing by improving efficiency, productivity, traceability, documentation, quality of products and services with increased customer satisfaction with features like cloud-based dashboard monitoring, remote program transfer, predictive maintenance and remote monitoring and control system.



You should see how we can boost your profits by making energy usage visible

Mitsubishi Electric's Fukuyama Works in western Japan manufactures energy-saving products. The plant has been thoroughly optimized with our “e&eco-factory” solution, which includes an Eco Webserver III. Its measures electricity use against production volume and employing our original analysis and display software, quantifies the results in an electricity-to-production ratio. This way, it makes energy instantly “visible,” drawing attention to any areas of waste. Through saving energy, it boost production efficiency.

Semiconductors and Devices

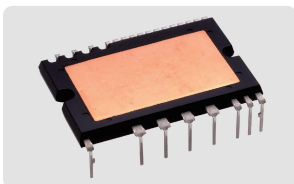
Mitsubishi Electric provides Semiconductors/devices including power modules and high power devices that handle the highly efficient control of power, optical devices that deliver the performance required in fiber-optic communication devices, high frequency devices that cover everything from radios and mobile phones to satellite communications, and the line of TFT-LDC modules that improve interfaces for information.



Power Modules

Mitsubishi Electric power modules are manufactured with state-of-the-art technologies that ensure the highest levels of performance and reliability while offering impressive energy savings for the products and systems they're used in. Our line-up of products is extensive, ranging from power modules developed to control high-voltage power generation, industrial manufacturing and railway systems to applications in home products, such as controlling the electricity used by air conditioners, washing machines and refrigerators. To maintain our market-leading position, the company's R&D activities aiming to realize further reductions in power consumption and size are ongoing.

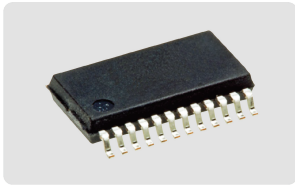
- Thyristor Modules
- Diode Modules
- IGBT Modules
- HVIGBT Modules
- Intelligent Power Modules (IPMs)
- HVIPMs
- DIIPMs
- PFC Modules
- Power MOSFET Modules



High Power Devices

High power devices contribute to increased efficiency and energy savings by supporting the high voltage, high current and usage environment of rollers in steel works, electric power systems and the subway. From rectifier diodes to a variety of Thyristors and Stacks, Mitsubishi Electric offers a broad range of new high power devices.

- Rectifier Diodes
- Thyristors
- Stacks



IC, Sensors

Mitsubishi Electric's lineup of power semiconductors include transistor arrays, HVICs (High Voltage IC) and sensors. Using the output from a 3-volt microcomputer, our transistor arrays make possible bufferless direct drive, helping contribute to lighter weight and more compact design in a variety of equipment. An HVIC is a high-voltage IC with various built-in protection functions; it uses input signals from a microcomputer or other device to directly drive gates in power MOSFETs or IGBTs. We also provide pressure sensors for such applications as barometric pressure gauges, as well as acceleration sensors to measure vibration in LCD projectors and industrial equipment.

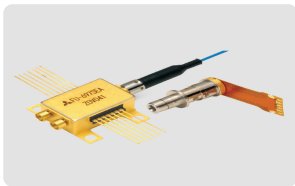
- Transistor Arrays
- HVICs (High Voltage IC)
- Sensors



High Frequency Devices

Mitsubishi Electric has long supported the advancement of wireless communication networks through the development of its high frequency devices. Products manufactured utilizing the latest electronics and other technologies combined with newly developed high-performance materials have kept us in a market leading position. Our range of high frequency devices are contributing to the wireless communications infrastructure, helping achieve more reliable wireless communications such as satellite communications, as well as smaller and more powerful mobile phones, and other high-performance network equipment.

- GaN High Frequency Devices
- GaAs High Frequency Devices
- Silicon RF Devices



Optical Devices

Mitsubishi Electric is at the forefront of industry in the development and production of laser diodes and modules, including the latest optical fiber communications for broadband and telecommunications networks, and laser diodes for display and industrial applications. Renowned for energy savings, reliability and high performance, our advanced technologies and products can be found in use in major systems for the optical communications infrastructure, as well as in applications for fiber-to-the-home (FTTH).

- Optical Fiber Communication Devices
- Laser Diodes for Industry & Display



How are we making a big difference in energy conservation

Mitsubishi Electric developed its revolutionary DIIPM power semiconductor module to control power flow in inverter-based ACs and other appliances, for enormous energy savings. In 2007, these devices saved about 28 billion kWh* of electricity worldwide - enough to power all 6 million households in Tokyo for over a year! Now DIIPM is conserving electricity in home appliances, industrial robots and low power industrial motor drives.

*Estimate of energy savings based on number of DIIPM-equipped air conditioning units in operation.

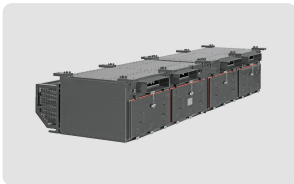
Transportation Systems

Mitsubishi Electric is contributing to reliable, safe, comfortable railway transportation through state-of-the-art products & systems and great maintenance and service networks. Focusing on eco-conscious products and manufacturing, the evolution of our energy - saving electronics technologies and system integration for components and systems utilized for all types of rolling stock is never-ending. Today, Mitsubishi Electric products and services are being introduced to various Metro Systems across India.



Traction Motor

Our State-of-the-Art AC Traction motor with Effective Self-ventilated Cooling System, Light weight and high capacity, adapting to environmental conditions in India support stable and reliable running of the Rolling Stock.



Converter-inverter & VVVF System

An advanced compact and light weight design is made available with stable controllability. The converters are designed for higher performance and facilitate ease of maintenance.



Auxiliary Power Supply System

Our SiC based Auxiliary Power Supply system is the latest light weight and compact Control equipment which regulates power output to auxiliary loads in the Rolling Stock, achieving higher energy efficiency by utilising Silicon Carbide based semiconductor.



Train Control and Management System (TCMS)

TCMS is known as the “Brain of the Train”, monitoring sub-system functions of the Rolling Stock, providing status information during Run-time to the Train operator and manages Wayside communication. Mitsubishi Electric Corporation, Japan has supplied its proven TCMS technology to Indian Metros.



Introduction of Indian Factory at Bidadi, Karnataka

Mitsubishi Electric has set up a factory in Bidadi (Near Bengaluru), Karnataka in 2015 to manufacture Propulsion Equipment like Traction Motor, Traction Converter and Auxiliary Power Supply.

With this factory, Mitsubishi Electric has been contributing to 'Make In India' initiative by supplying equipment to many metro rail projects in India.

Building, Data Centre & Manufacturing Solutions

Mitsubishi Electric is a one-stop gateway to fulfil the electric & electronic equipment needs of diverse business segments. From advanced Air Conditioning Systems, Elevators & Escalators, Chillers, Low Voltage Switchgears to the technologically driven Factory Automation Systems we offer solutions that are efficient and reliable.



Commercial & Residential Building Solutions

Mitsubishi Electric offers a complete building solution from HVAC, PLC, SCADA to world class elevators & escalators, advanced power distribution and energy saving supporting solutions. Our electrical & electronic equipment and technologies are efficient, reliable and designed to last which ensure healthy and safe operations of your residential or commercial building.



Manufacturing Facility Solutions

We are pioneers of Controllers, Drives, HMIs, Industrial and Collaborative Robots, Inverters, PLCs, e-F@ctory, Low Voltage Switchgears. Our expertise in manufacturing solutions paired with our diverse product portfolio of HVAC, Elevators etc. make us a Total solution provider for manufacturing facilities. Our advanced and state-of-the-art range of products & technologies are here to revolutionize and make the manufacturing facilities efficient.



Data Centre Solutions

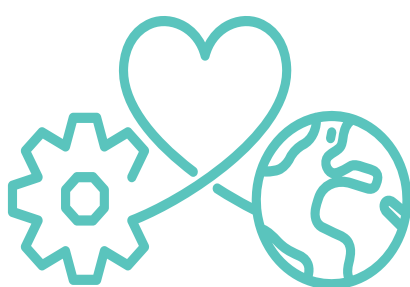
Mitsubishi Electric Companies in India along with our Group Company Climaveneta India and TMEiC offer tailored solutions under one product package which include IT Cooling Systems, Building Management System, Power Distribution Systems, Elevators and Escalators, Chillers and Uninterrupted Power Supply. Our extensive range of high-quality products and reliable solutions make us a one-stop Electrical & Mechanical solution provider for Data Centers.

Better Ideas For A Greener World

Environmental Sustainability Vision 2050

Environmental Declaration

Protect the air, land and water with our hearts and technologies
to sustain a better future for all.



**Environmental
Sustainability
Vision 2 0 5 0**

To solve various factors that
lead to environment issues,
the Mitsubishi Electric Group
shall unite the wishes of each
and every person, and strive
to create new value for a
sustainable future.

Three Environment Action Guidelines

1

Apply diverse technologies in
wide-ranging business areas to solve
environmental issues

2

Challenge to develop
business innovation for future
generations

3

Publicize and share new
values and lifestyles

Key Initiatives

- Climate Change Measures
- Resource Circulation
- Live in Harmony with Nature

- Long-term Activities
- Innovation
- Nurturing Human Resources

- Understanding Needs
- Co-create and Disseminate New Values
- Live in Harmony with the Region

Sustainable Development Journey

We, as a responsible corporate citizen, realize the need for sustainable development. We pursue initiatives related to quality management, environmental preservation, philanthropy, and improved communications with all stakeholders. We are vigilant in our enforcement of corporate ethics and compliance and consistently work towards improving our defined scope of CSR plan areas.



Clean Water & Sanitation

Refurbishing of Drinking Water Facility.
Installation of RO, Water Cooler, Water tank.
Building civil infrastructure for water facilities.



Climate Action

Increasing employee sensitivity towards nature.
Planting trees at Government Schools and Rural areas.
Maintaining green patches in Pune since 2015



Good Health & Well Being

Organizing preventive health check-up camps in rural areas
Facilitating eye-check-up for the elderly
Promoting healthy lifestyle through our awareness camps



Quality Education

Empowering young minds with advanced technology.
Organising Mitsubishi Electric Cup since 2016.
Facilitating various Skill Development activities.



Working towards a Recycling-Based Society

Under the guidelines of the Central Government of India, e-Waste (Management and Handling) Rules 2011, Mitsubishi Electric India Pvt. Ltd. stands committed to implement e-Waste Rules.

MITSUBISHI ELECTRIC INDIA PVT. LTD.

SALES OFFICES

GURUGRAM (HEAD OFFICE)

3rd Floor, Tower A, Global Gateway, MG Road,
Gurugram – 122002, Haryana, India
Tel: +91 (124) 6739300, Fax: +91 (124) 4630 399 / 398

BENGALURU

Esquire Centre, No. - 9, Ground Floor, B - Block, Trinity Circle,
MG Road, Bengaluru - 560001, Karnataka, India.
Tel: +91 (80) 4020 1600 | Fax: +91 (80) 4020 1699

CHANDIGARH

SCO- 376, Second Floor, Sector 32 D,
Chandigarh - 160036, Chandigarh, India.
Tel: +91 (172) 4601645

COIMBATORE

(BMH Srinivas), 2nd Floor, Door No. 1604, Trichy Road,
Coimbatore - 641018, Tamil Nadu, India.
Tel: +91 (422) 4385606

INDORE

Unit No - 403, 4th Floor, Apollo Premier, Plot No - 1, Rear Side,
Vijay Nagar, Indore - 452 010, Madhya Pradesh, India.
Tel: +91 (731) 409 8991

LUCKNOW

B-48-A, Nirala Nagar,
Lucknow - 226020, Uttar Pradesh, India.
Tel: +91 (0522) 4002607

NAGPUR

JP House, Plot No.8 Ring Road, Pratap Nagar
Nagpur-440 024, Maharashtra, India.

RUDRAPUR

3 & 5, 1st Floor, Rudra Arcade, Haldwani Road,
Dist:- Udham Singh Nagar - 263153 Uttarakhand, India.
Tel: +91 (5944) 246899

VADODARA

A - 1/2, 2nd Floor, Status Plaza, Opp. Relish Resort
Aksar Square, O.P. Road, Vadodara - 390020, Gujarat, India.
Tel: +91 (265) 2314699 | Fax: +91 (265) 233 3307

DELHI (REGISTERED OFFICE)

B1/G3, 4th Floor, Mohan Cooperative Industrial Area,
New Delhi-110044, Delhi, India
Tel : +91(011) 66057900

BENGALURU-PEENYA

CNC Technical Center, Plot No. 56, 4th Main Road,
Peenya Phase - 3, Peenya Industrial Area,
Bengaluru – 560058 Tel: + 91 - (80) - 4655 2121
Fax: +91 - (80) - 4655 2148

CHENNAI

Isana Katima, 3rd Floor, Door No. 497 & 498,
Ponamallee High Road, Arumbakkam,
Chennai – 600106, Tamil Nadu, India.
Tel: +91 (44) 49232222 | Fax: +91 (44) 49232249

GURUGRAM

Mitsubishi Electric India Pvt Ltd Ground Floor,
Plot No-517, Udyog Vihar, Phase-3, Gurgaon,
Haryana-122022, India
Tel : +91 (124) 6739300

JAIPUR

9B/10, 4th Floor, Man Upasana Plaza, Sardar Patel Marg,
C - Scheme, Jaipur - 302001, Rajasthan, India.
Tel: +91 (141) 4011109

LUDHIANA

SCO-14, Second Floor, Pakhowal Road,
Ludhiana - 141002, Punjab, India.
Tel: +91 (161) 4061654

PUNE

ICC-Devi Gaurav Technology Park, Unit no. 402,
Fourth Floor, Survey no. 191-192 (P), Opp.
Vallabh Nagar Bus Depot, Pune – 411018,
Maharashtra, India Tel: +91 (20) 68192100

SURAT

401, Royal Trade Centre, Opp. Star Bazar, Adajan Hajira
Road, Adajan, Surat - 395009, Gujarat, India.
Tel: +91 (261) 4003111

AHMEDABAD

204-209, 2nd Floor, 31FIVE, Corporate Road,
Prahladnagar, Ahmedabad-380015, Gujarat, India
Tel: +91 (079) 67777888

BHUBANESWAR

Room No. 507, 5th Floor,
Forum Mart, 89, Kharvel Nagar, Unit-III,
Bhubaneswar - 751 001, Odisha, India.
Tel :+91 (674) 2380633

COCHIN

Room No. G1A, Netage Arcade, Church Landing Road,
Ernakulam, Kochi - 682016, Kerala, India.
Tel: +91 (484) 4862093

HYDERABAD

HNIS. 615, 7-1-616 & 617/A, 5th floor, Imperial Towers,
Ameerpet, Hyderabad, 500016, Telangana, India.
Tel: +91 (40) 43438888 | Fax: +91 (40) 43438899

KOLKATA

PS Srijan Corporate Park, Tower-I, 12th Floor,
Office No-1202D, Block-G, Sector-V, Salat Lake,
Electronics Complex, Kolkata, West Bengal-700091

MUMBAI

305-306, 3rd Floor, "Windfall", Sahar Plaza Complex,
Andheri Kurla Road, J. B. Nagar, Andheri (E),
Mumbai - 400059, Maharashtra, India.
Tel: +91 (22) 66116200 | Fax: +91 (22) 66116299

RAJKOT

Unit No- 602 - 603A, 6th Floor, Alpha Plus 150 Ft,
Ring Road, Rajkot - 360007, Gujarat, India .
Tel: +91 (0281) 2585525

VIJAYWADA

67, Third Floor, Corniche Square, Gurunanak Colony
Main Road, Vijaywada - 520008 Andhra Pradesh, India.
Tel: +91 86665 16999

MANUFACTURING

BENGALURU - PEENYA

CNC Technical Center, Plot no. 56,
4 Main Road, Peenya Phase 3,
Peenya Industrial Area, Bengaluru - 560058,
Karnataka, India.
Tel: +91 (80) 46552121
Fax: +91 (80) 46552147

R & D CENTER

PUNE

ICC-Devi Gaurav Technology Park, Unit no. 402,
Fourth Floor, Servey no. 191-192 (P) Opp.
Vallabh Nagar Bus Depot, Pune - 411018,
Maharashtra, India Tel: +91 (20) 68192100

BENGALURU - BIDADI

Plot No- 34-E 1st Phase,
Bidadi Industrial Area, Sy No. 54,
Shyanumangala Village, Bidadi Hobli,
Ramanagara Taluk & Dist - 562109,
Karnataka, India.
Tel: +91 (80) 30175100

PUNE

EL-31/15, J BLOCK
M.I.D.C Bhosari, Pune- 411026
Maharashtra , India
Tel : +91 (20) 27102000

EL-1, 2 & 3, J BLOCK, M.I.D.C
Bhosari, Pune- 411026, Maharashtra , India
Tel : +91 (20) 27102000

<http://in.MitsubishiElectric.com>